

**absen Energy**

**absen**

Stock code: (300389.SZ)



# POWER A GREEN WORLD

Shenzhen Ruidian Green Energy Technology Co.,Ltd

Office Address: A801 Building 3A, Cloud Park, Bantian, Longgang District, Shenzhen  
Factory Address: No.3, East Hua'nan Road, Dongjiang Hi-Tech Industrial Park, Huizhou

✉ [rdmarketing@absen.com](mailto:rdmarketing@absen.com)

🌐 [www.absenenergy.com](http://www.absenenergy.com)

[f](#) [in](#) ABSEN ENERGY 🔍

Reliable Home & Business  
Energy Storage Solution Provider

## CATALOGUE

---

**01**      **About us**

- 01      Company Profile
  - 03      Company Milestones
  - 05      Certificates
  - 07      Global Layout
- 

**09**      **Residential ESS**

- 11      Balcony Pod Series
  - 13      Pile Series
  - 15      Pile HV
  - 17      Pile S 60/51
  - 19      Ebox 5
  - 21      Ebox 8
  - 23      Ebox 16
  - 25      Rove Series
  - 27      Unity LV
  - 29      Unity HV
- 

**31**      **Commercial & Industrial ESS**

- 33      Unity HV2
  - 35      Cube 60
  - 37      Cube 72-108
  - 39      Cube 125-225
  - 41      Cube 225-Y
  - 43      Cube 261
  - 45      Cube 261-Plus
  - 47      Cube 261-Y
  - 49      Cube 418
  - 51      Cube 1000-A
  - 53      StorC 1MW/2MWh
  - 55      StorC 2.5MW/5MWh
- 

**57**      **Cloud Management Platform**

---

**59**      **Case Studies**



**26000m<sup>2</sup>**  
Production Area

**2.5GWh+**  
Annual Output

**140+**  
Countries Global Reach

**2**  
R&D Centers

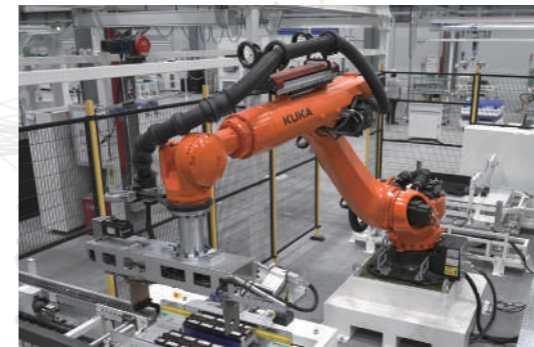
**500+**  
R&D Staff

Powered by  
**absen**  
Stock code: (300389.SZ)

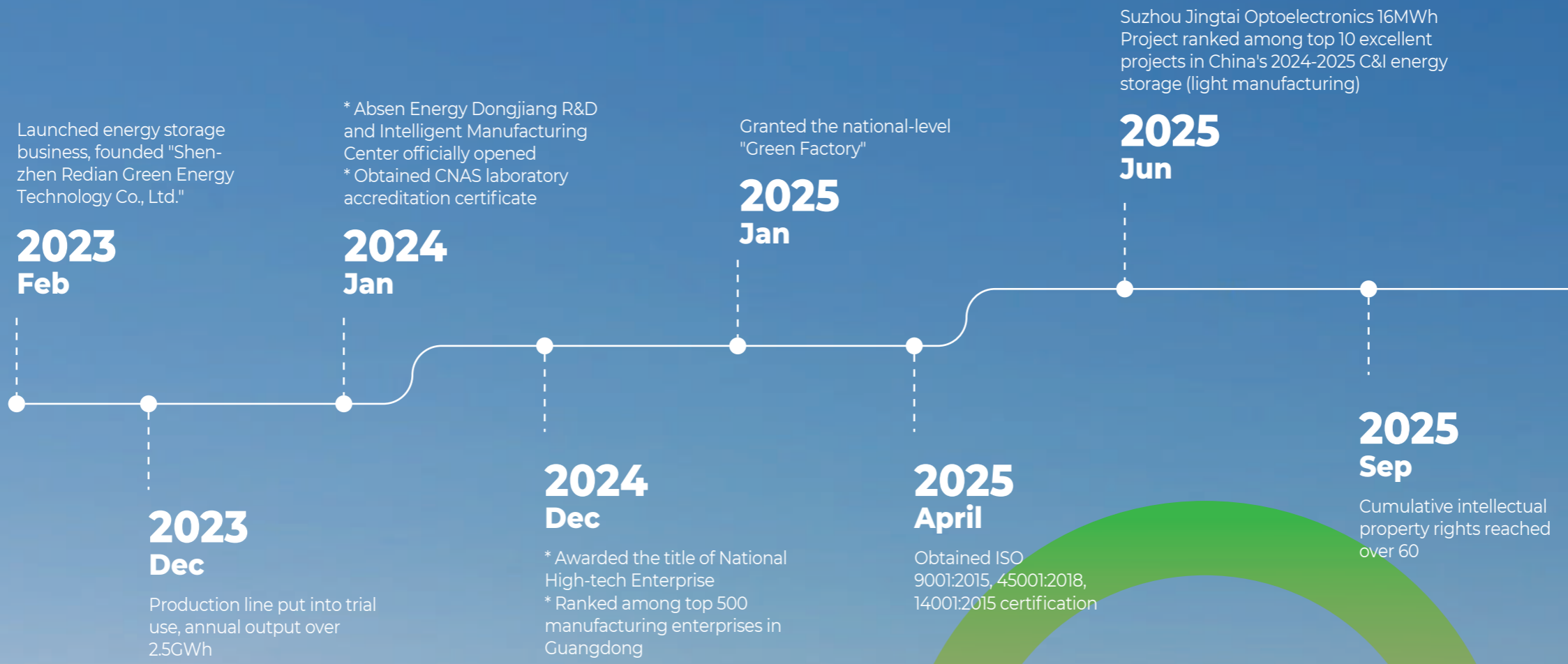
# POWER A GREEN WORLD



Absen Energy is a holding subsidiary of Absen (stock code: 300389), a listed company, which is mainly engaged in new energy energy storage business, focusing on the research and development, production and sales of household energy storage and industrial and commercial energy storage products. Absen Energy's business layout is global, and its product sales and service network can cover Asia, Europe, Africa, South America and other regions, and are widely used in dozens of countries and regions. We are committed to providing customers with sustainable green energy storage products and services, so that green energy can benefit every individual, family and organization, and become a reliable home & business energy storage solution provider



# COMPANY MILESTONES



# HONORARY CERTIFICATES



China's 500 Most Valuable Brands 2024 China Excellent Management Company

National High-tech Enterprise Member of CNESA

Member of EESA 2023 China Energy Storage Industry "Rookie" Award

2023 Energy Storage Industry Innovation Enterprise Award

2023 C&I ESS Benchmark Project Award

2023-2024 C&I ESS Top 10 Excellent Products

2024 "Top 100 New Energy Storage Brands" Award

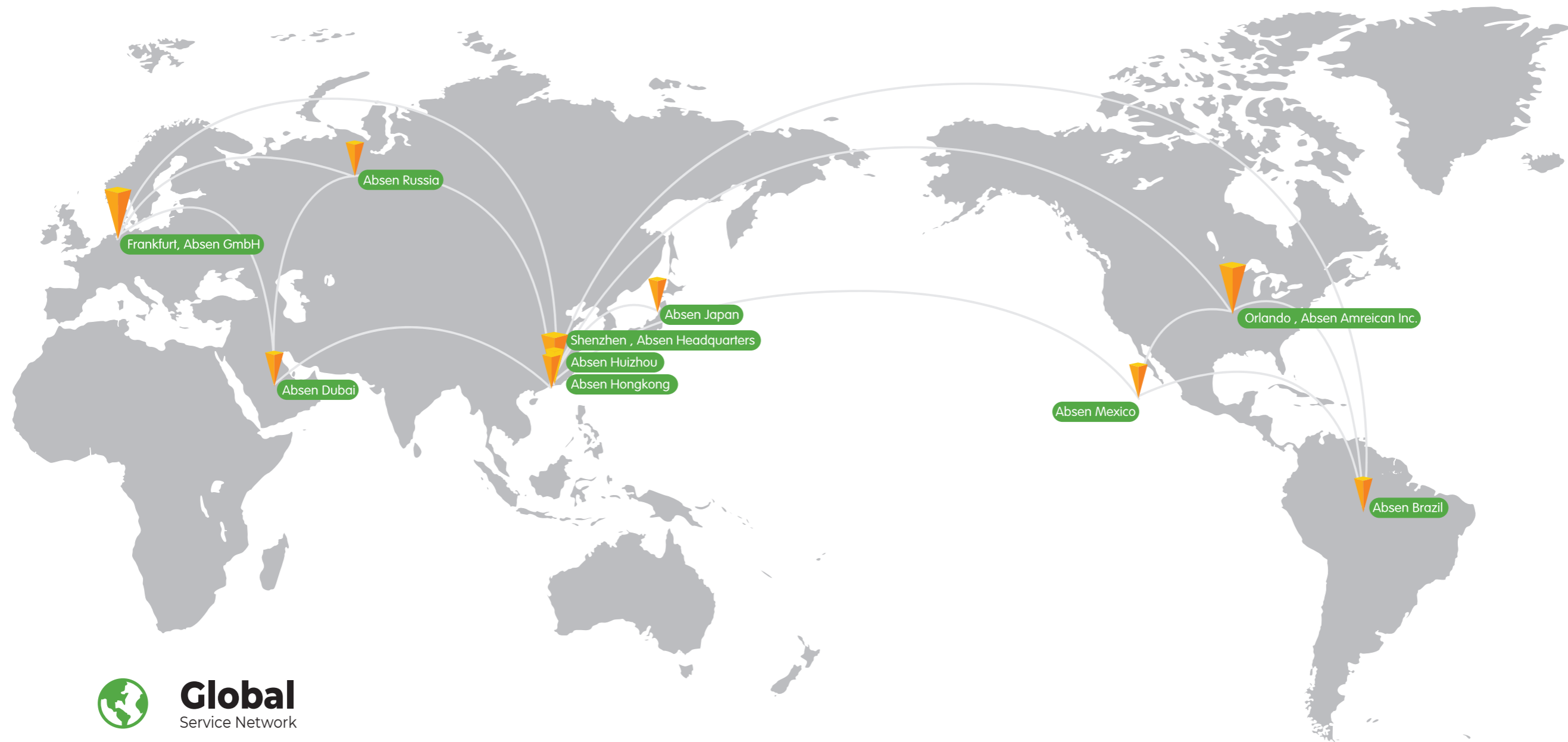
2024 SNEC Top Ten Highlights "Energy Storage Technology Excellence Award"

2024 Top Ten Residential Energy Storage Brands 2024 Best New Enterprise Award

2024 Best User-side Application Scenario Innovation Project Award



# GLOBAL LAYOUT



**Global**  
Service Network



**9**  
Technical Service Centers



**700+**  
Service Partners



**18**  
Global Branches



**30+**  
Channel Partners



**7X24 Hours**  
Response Service



**4008-036-037**  
All-Day Service

# PLUG AND PLAY

## Smart Home Energy Solutions

- AI dynamic management, APP remote control of load
- Plug and play, 0 installation cost
- Full scene adaptation, 2kWh~60kWh expansion capacity
- Off-grid switching  $\leq 20\text{ms}$ , seamless switching



# Balcony Plug and Play ESS

## POD 2000

- AI Automatic Management : Reduces daily electricity bills by over 75% at most, return-on-investment within 4.1 years (When no subsidy)
- Zero Waste: Pair with Shelly wireless smart meter EM Gen 3 and Plug S Gen 3
- UPS: Maximum 2.4kVA off grid load
- Package Weight ≤ 30kg: Reduces shipping costs by 14%



Reliable Home & Business Energy Storage Solution Provider



| Model                           | PDS-24/20-LP1 | PDS-24/40-LP1 | PDS-24/61-LP1 | PDS-24/81-LP1      | PDS-24/102-LP1 |
|---------------------------------|---------------|---------------|---------------|--------------------|----------------|
| <b>PV Input</b>                 |               |               |               |                    |                |
| Max Input Voltage (VDC)         |               |               |               | 100                |                |
| Max PV Input Current (A)        |               |               |               | 16*2               |                |
| PV Input Voltage Range (VDC)    |               |               |               | 10-100             |                |
| Max Input Power (W)             |               |               |               | 800*2              |                |
| <b>AC Output (On Grid Mode)</b> |               |               |               |                    |                |
| Rated Output Voltage (VAC)      |               |               |               | 220~240            |                |
| Rated Frequency (Hz)            |               |               |               | 50/60              |                |
| Max Output Current (A)          |               |               |               | 10.9 (Default 3.6) |                |
| Max Output Power (W)            |               |               |               | 2400 (Default 800) |                |
| <b>AC INPUT</b>                 |               |               |               |                    |                |
| Rated AC Input Voltage (VAC)    |               |               |               | 220~240            |                |
| Max Input Current (A)           |               |               |               | 9                  |                |
| Rated Frequency (Hz)            |               |               |               | 50/ 60             |                |
| Max Input Power (W)             |               |               |               | 2000               |                |

| Model                            | PDS-24/20-LP1  | PDS-24/40-LP1 | PDS-24/61-LP1 | PDS-24/81-LP1 | PDS-24/102-LP1 |
|----------------------------------|--|---------------|---------------|---------------|----------------|
| <b>Battery</b>                   |  |               |               |               |                |
| Expansion Battery Number         | 0  | 1             | 2             | 3             | 4              |
| Battery Type                     | LFP  |               |               |               |                |
| Rated Battery Voltage (VDC)      | 51.2   |               |               |               |                |
| Battery Energy (kWh)             | 2.048  | 4.096         | 6.144         | 8.192         | 10.24          |
| <b>AC Output (Off Grid Mode)</b> |  |               |               |               |                |
| Rated AC output Voltage          | 220~240  |               |               |               |                |
| Rated Frequency (Hz)             | 50/60  |               |               |               |                |
| Max Output Current (A)           | 9.09   | 10.9          | 10.9          | 10.9          | 10.9           |
| Max Output Power (W)             | 2400   | 2400          | 2400          | 2400          | 2400           |
| <b>System</b>                    |  |               |               |               |                |
| IP Rate                          | IP65   |               |               |               |                |
| Dimensions (W*D*H)mm             | 480*215*540  | 480*215*780   | 480*215*1020  | 480*215*1260  | 480*215*1500   |
| Weight (kg)                      | 25   | 42            | 59            | 76            | 93             |
| <b>Warranty</b>                  |  |               |               |               |                |
| Certificates                     | UN38.3, IEC62619, IEC61727, IEC62116, EN/IEC62109-1/-2, EN/IEC61000-6-1/-3, RED, EN50549 -1, EN 50549-10, VDE4150/0124 |               |               |               |                |

# Low-Voltage Stackable Residential Battery

## Pile Series

- Supports 1 - 4 modules
- Compatible with branded inverters
- Lithium Iron Phosphate (LFP) battery
- Enables remote monitoring via RS485/CAN

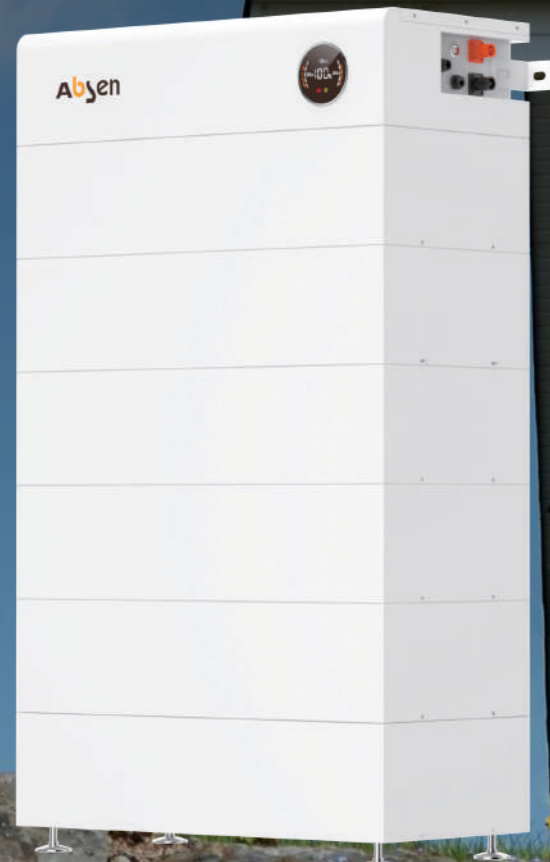


| Model                                | PX-5.1-L  | PX-10.2-L   | PX-15.3-L    | PX-20.4-L    |
|--------------------------------------|---|-------------|--------------|--------------|
| Nominal Voltage (VDC)                | 51.2  |             |              |              |
| Nominal Capacity (kWh)               | 5.12  | 10.24       | 15.36        | 20.48        |
| Working Voltage Range (VDC)          | 44.8~56.16  |             |              |              |
| Charge Voltage (VDC)                 | 58.4  |             |              |              |
| Nominal Charge/Discharge Current (A) | 50  |             |              |              |
| Max Charge/Discharge Current (A)     | 100   |             |              |              |
| Peak Current (A)                     | 200@3sec  |             |              |              |
| Cycle Life                           | 6000@80%DOD,25°C/0.5C                                       |             |              |              |
| Certificates                         | CB, IEC62619, CE-EMC, EN61000-6-1/2/3/4; UKCA; UN38.3; MSDS |             |              |              |
| <b>Structure</b>                     |   |             |              |              |
| Dimensions (W*D*H)(mm)               | 600*210*440   | 600*210*740 | 600*210*1040 | 600*210*1340 |
| Weight (Kg)                          | 57.2  | 106.9       | 156.6        | 206.3        |
| IP Rating                            | IP65  |             |              |              |
| Installation                         | Stacking type   |             |              |              |
| <b>Working Environment</b>           |   |             |              |              |
| Charge Working Temperature (C)       | -20~55  |             |              |              |
| Discharge Working Temperature (C)    | -20~60  |             |              |              |
| Altitude (m)                         | <2500   |             |              |              |
| Humidity (RH)                        | 5-95%(w/o condensing)                                       |             |              |              |
| <b>Communication</b>                 |   |             |              |              |
| Communication Port                   | RS485,CAN   |             |              |              |
| Display                              | SOC status indicator, LED indicator                         |             |              |              |

# High-Voltage Stackable Residential Battery

## Pile HV

- Modular design allows expansion from 2 to 6 modules
- Swift Installation, single 44kg module, no wiring required
- LFP battery cells ensure stable performance and 6000 cycle lifespan
- Optional heater for low-temp use
- Built-in smart BMS, auto address allocation
- WiFi, BT, OTA functions included

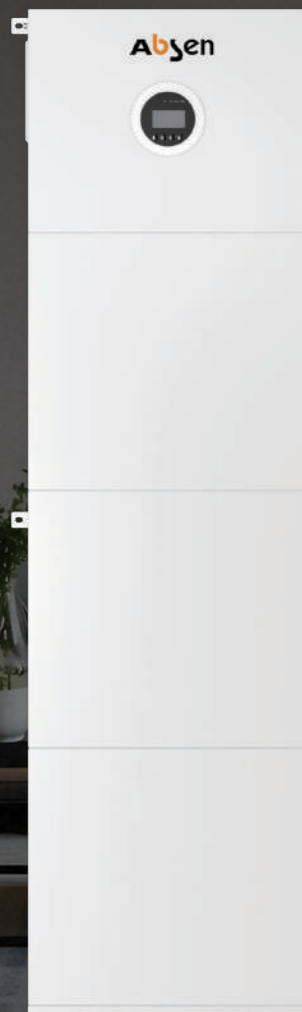


| Model                             | PX-9.84-HPB                         | PX-14.76-HPB | PX-19.68-HPB | PX-24.60-HPB | PX-29.52-HPB |
|-----------------------------------|-------------------------------------|--------------|--------------|--------------|--------------|
| Battery Type                      | LFP                                 |              |              |              |              |
| Battery Pack Number               | 2                                   | 3            | 4            | 5            | 6            |
| Nominal Capacity (kWh)            | 9.84                                | 14.76        | 19.68        | 24.6         | 29.52        |
| Voltage (V)                       | 116~146                             | 174~219      | 232~292      | 290~365      | 348~438      |
| Rated Voltage (V)                 | 128                                 | 192          | 256          | 320          | 384          |
| Rated Working Current (A)         | 40                                  |              |              |              |              |
| Max Charging Current (A)          | 70                                  |              |              |              |              |
| Max Discharging Current (A)       | 70                                  |              |              |              |              |
| Certification                     | IEC62619、EN61000-6-1/3、UN38.3       |              |              |              |              |
| <b>General Parameter</b>          |                                     |              |              |              |              |
| Display                           | LCD indicator                       |              |              |              |              |
| Communication                     | RS485/CAN                           |              |              |              |              |
| Dimensions (W*D*H)(mm)            | 573*385*395                         | 573*385*535  | 573*385*675  | 573*385*815  | 573*385*955  |
| Weight (Kg)                       | 98                                  | 142          | 186          | 230          | 274          |
| Working Temperature (C)           | Charging: 0~50; Discharging: -20~55 |              |              |              |              |
| Operating Humidity (RH)           | 5%~95%, No condensation             |              |              |              |              |
| Altitude (m)                      | 3000                                |              |              |              |              |
| Cooling Method                    | Natural Cooling                     |              |              |              |              |
| IP Rating                         | IP65                                |              |              |              |              |
| Installation Method               | Stackable floor-standing            |              |              |              |              |
| Scalability                       | 2~6                                 |              |              |              |              |
| <b>Battery Pack Parameters</b>    |                                     |              |              |              |              |
| Model                             | GM-5.0-HPB                          |              |              |              |              |
| Battery Pack Specifications (kWh) | 4.92                                |              |              |              |              |
| Life Cycles                       | 6000@90%DOD, 25C/0.5C               |              |              |              |              |
| Dimensions (W*D*H)(mm)            | 573*385*140                         |              |              |              |              |
| Weight (kg)                       | 44                                  |              |              |              |              |

# All-in-one Residential Energy Storage System

## Pile S 60/51

- Modular structure, expandable up to 3 units, quick installation, compact for space-saving
- Built-in 120A solar charger, 60-500V wide PV input voltage range, slim profile
- Intelligent cell balancing, current-limiting function, multi-protection mechanisms
- WiFi real-time monitoring, smart charging design for extended battery life



| Model                                | Pile S 60/51                                  |              |              |
|--------------------------------------|---|--------------|--------------|
| <b>System Parameter</b>              |   |              |              |
| Qty. of Battery Modules              | 1   | 2            | 3            |
| Battery Capacity (kWh)               | 5.12  | 10.24        | 15.36        |
| Rated Power (W)                      | 4400  | 6000         | 6000         |
| Ingress Protection                   | IP21  |              |              |
| Operating Temperature (°C)           | 0-55  |              |              |
| Relative Humidity                    | 20%-95% (Non-condensing)                      |              |              |
| Net Weight (kg)                      | 55  | 97           | 139          |
| Dimensions (W*D*H)(mm)               | 500*150*880                                   | 500*150*1340 | 500*150*1800 |
| Max. Operating Altitude (m)          | 3000 (Derating above 1000)                    |              |              |
| Display                              | LCD   |              |              |
| Communication                        | RS485/CAN/WIFI                                |              |              |
| <b>Inverter Module</b>               |   |              |              |
| Model                                | PXS-60/51-LP1                                 |              |              |
| Rated Battery Voltage (V)            | 51.2  |              |              |
| Max. PV Input Power (W)              | 9000  |              |              |
| Max. Open Voltage (VDC)              | 500   |              |              |
| MPPT Input Voltage Range (VDC)       | 60-450  |              |              |
| Number of MPPT Trackers              | 1   |              |              |
| Rated AC Current (A)                 | 26  |              |              |
| Max. PV Input Current (A)            | 27  |              |              |
| Rated Grid Voltage (VAC)             | 208/220/230/240; L+N+PE                       |              |              |
| Grid Voltage Range (V)               | 90~280±3 (APP/GEN mode); 170~264±3 (UPS mode) |              |              |
| Rated AC Power (W)                   | 4400  | 6000         | 6000         |
| Peak Output Power (Off-grid)(W)      | 5000  | 6000         | 6000         |
| Switch Time (ms)                     | 10(APP/UPS mode); 20(GEN mode)                |              |              |
| Max. Efficiency (Battery Mode)       | 94%@48VDC                                     |              |              |
| Net Weight (kg)                      | 11  |              |              |
| Dimensions (W*D*H)(mm)               | 500*150*400                                   |              |              |
| <b>Battery Module</b>                |   |              |              |
| Model                                | PXS-60/51-LPB                                 |              |              |
| Nominal Voltage (V)                  | 51.2  |              |              |
| Voltage Range (V)                    | 43.2-58.4                                     |              |              |
| Capacity (A)                         | 100   | 200          | 300          |
| Nominal Charge/Discharge Current (A) | 50/100  | 100/100      | 100/100      |
| Max Charge/Discharge Current         | 100/100                                       | 140/140      | 140/140      |
| Battery Type                         | LiFePO <sub>4</sub>                           |              |              |
| Net Weight (kg)                      | 42  | 84           | 126          |
| Dimensions (W*D*H)(mm)               | 500*150*460                                   | 500*150*920  | 500*150*1380 |

# Residential Battery (LV)

## Ebox 5

- Volume Reduced by 40%, up to 16 units can be paralleled. Capacity ranges from 5 to 80kWh
- 100Ah LFP Cells, max charge/discharge current is 100A
- Intelligent cell balancing and current-limiting function; Multiple protections
- Smart screen display; No DIP switch, automatic address allocation; Optional WiFi and BT modules



| Model                                | Ebox5  |
|--------------------------------------|--|
| Nominal Voltage (VDC)                | 51.2   |
| Operating Voltage (V)                | 44.8-57.6                                    |
| Capacity (Ah)                        | 100  |
| Nominal Capacity (kWh)               | 5.12   |
| Nominal Charge/Discharge Current (A) | 50/50  |
| Max Charge/Discharge Current (A)     | 100/100                                      |
| Max Discharge Depth (A)              | 95%  |
| Battery Type                         | LiFePO <sub>4</sub>                          |
| Structure                            |  |
| Dimensions (W*D*H)(mm)               | 350x150x565                                  |
| Weight (kg)                          | 40   |
| IP Rating                            | IP20   |
| Installation                         | Wall mounted                                 |
| Working environment                  |  |
| Charge Working Temperature (°C)      | 0~55   |
| Discharge Working Temperature (°C)   | -20~55                                       |
| Altitude (m)                         | <2500  |
| Humidity (RH)                        | 5-95%  |
| Communication/Warranty               |  |
| Communication Port                   | RS485,CAN                                    |
| Warranty Period                      | 5 years                                      |
| Certificates                         | CB, IEC62619,CE-EMC,EN61000;UKCA;UN38.3;MSDS |

# Residential Battery (LV)

## Ebox 8

- 16 units parallelable, 8-128kWh capacity
- Max charge/discharge current of 150A
- Built-in WiFi for seamless APP remote intelligent monitoring & real-time management
- Supports APP/OTA remote firmware updates OTA function



| Model                                | Ebox 8                  |
|--------------------------------------|-------------------------|
| Nominal Voltage (VDC)                | 25.6                    |
| Capacity (Ah)                        | 314                     |
| Nominal Capacity (kWh)               | 8.038                   |
| Built-In Fuse (DC V/A)               | 70/250                  |
| Nominal Charge/Discharge Current (A) | 150/150                 |
| Max Charge/Discharge Current (A)     | 150/150                 |
| Cycle Life                           | 8000 @90%DOD, 25 C/0.5C |
| Structure                            |                         |
| Dimension(W*D*H)(mm)                 | 380*240*535             |
| Weight (kg)                          | 63.8                    |
| IP Rating                            | IP20                    |
| Installation                         | Wall mounted            |
| Working environment                  |                         |
| Charge Working Temperature (C)       | 0~55                    |
| Discharge Working Temperature (C)    | -20~55                  |
| Altitude (m)                         | <2500                   |
| Humidity (RH)                        | 5-95%                   |
| Communication/Warranty               |                         |
| Communication Port                   | RS485, CAN2.0           |
| Warranty Period                      | 5 years                 |
| Certificates                         | UN38.3;MSDS             |

# Residential Battery(LV)

## Ebox 16

- Up to 16 units in parallel, 314Ah LFP Cells, 16~256kWh capacity
- With max 200A discharge current, it boosts charging efficiency and delivers robust power output
- Built-in WiFi for seamless remote intelligent APP monitoring and real-time management; Supports APP OTA & remote firmware updates to cut after-sales costs
- Less volume and weight, easy to move by one person with wheels



| Model                                | Ebox 16  |
|--------------------------------------|--|
| Nominal Voltage (VDC)                | 51.2   |
| Capacity (Ah)                        | 314  |
| Nominal Capacity (kWh)               | 16.076   |
| Built-In Circuit Breaker             | 125A,2P  |
| Nominal Charge/Discharge Current (A) | 157/157  |
| Max Charge/Discharge Current (A)     | 200/200  |
| Max Discharge Depth (A)              | 95%  |
| Cycle Life                           | 8000 @90%DOD,25°C,0,5C   |
| Structure                            |  |
| Dimensions (W*D*H)(mm)               | 380x239x838  |
| Weight (kg)                          | 116  |
| IP Rating                            | IP21 (with top cover)  |
| Installation                         | Floor mounted  |
| Working environment                  |  |
| Charge Working Temperature (°C)      | 0~55   |
| Discharge Working Temperature (°C)   | -20~55   |
| Altitude (m)                         | <2500  |
| Humidity (RH)                        | 5-95%  |
| Communication/Warranty               |  |
| Communication Port                   | RS485,CAN  |
| Warranty Period                      | 10 years   |
| Certificates                         | CB, IEC62619,CE-EMC,EN61000;UKCA;UN38.3;MSDS                       |
| Compatible Inverter List             | DEYE,GROWATT ,VICTRON,SOLIS,MUST,LUXPOWER,AFORE,SUNSYNK,Felicty... |

# Residential Off-grid Inverter

## Rove 3.6/6.0/12.0KW

- Built-in solar charger
- Wide MPPT range 60-500V
- Complete CE certificate
- Detachable dust cover
- Support lithium/lead-acid battery
- Lithium battery activation
- WiFi monitoring



| Model                              | Rove 3.6KW  | Rove 6.0KW                             | Rove 12.0KW   |
|------------------------------------|---|--|---|
| <b>AC Input</b>                    |   |  |   |
| Rated Input Voltage (VAC)          | 208/220/230/240; L+N+PE   |  | 220/230/240; L+N+PE   |
| Voltage Range (VAC)                | 90~280±3 (APP/GEN mode); 170~264±3 (UPS mode)                                       |  |   |
| Frequency (Hz)                     | 50/60 (Auto adaptive)   |  |   |
| <b>AC Output</b>                   |   |  |   |
| Rated Power (kW)                   | 3.6   | 6                                      | 12  |
| Peak Power (kVA)                   | 7.2   | 12                                     | 24  |
| Voltage (VAC)                      | 208/220/230/240±5%  |  | 220/230/240±5%  |
| Power Factor (PF)                  | 1   |  |   |
| Frequency (Hz)                     | 50/60±0.1%  |  |   |
| Switch Time (ms)                   | 10 (APP/UPS mode); 20 (GEN mode)  |  |   |
| Wave Form                          | Pure sine wave  |  |   |
| Overload Capacity (Battery Mode)   | 60s@102%-110% load;<br>10s@110%-130% load;<br>3s@130%-150% load;<br>0.2s@>150% load | 1min@102%~120% load;<br>10s@>120% load | 1min@102%~125%Load<br>10s@>125%Load                                     |
| Max. Efficiency (Battery Mode)     | 92.7%@24VDC   | 94%@48VDC                              | 94%@48VDC   |
| <b>Charger (PV/AC)</b>             |   |  |   |
| Solar Charger Type                 | MPPT  |  |   |
| Max PV Input Current/Input Power   | 18A/5000W   | 27A/9000W                              | Using One MPPT: 27A/9KW<br>Using Two MPPTs: 22.5A/Per, MPPT, 15KW/Total |
| MPPT Range@Operating Voltage (VDC) | 40-450  | 60-450                                 | 60-450  |
| Max PV Open Circuit Voltage (VDC)  | 500   |  |   |
| Max. Charge Current (PV/AC)(A)     | 100   | 120                                    | 160   |
| <b>Battery</b>                     |   |  |   |
| Rated Voltage (VDC)                | 24  | 48                                     | 48  |
| Floating Charge Voltage (VDC)      | 27  | 54                                     | 54  |
| Overcharge Protection (VDC)        | 30.5  | 61                                     | 61  |
| Battery Type                       | Lithium or Lead-acid  |  |   |
| <b>Interface</b>                   |   |  |   |
| HMI                                | LCD   |  |   |
| Interface Module                   | RS485/RS232/CAN   |  |   |
| Monitoring                         | WiFi (Optional)   |  |   |
| <b>General Data</b>                |   |  |   |
| Ingress Protection                 | IP21  |  |   |
| Operating Temperature (°C)         | -10~60  |  |   |
| Relative Humidity                  | 20%~95%(Non-condensing)   |  |   |
| Storage Temperature (°C)           | -15~60  |  |   |
| Net Weight (kg)                    | 5.8   | 8.2                                    | 15  |
| Dimensions (W*D*H)(mm)             | 284*95*432.5  | 330*110*402.5                          | 420*120*503.6   |
| Max Operating Altitude (m)         | 4000 (Derating above 1000)  |  |   |

# Unity Series Residential Battery (LV)

## Unity LV

- Supports up to 48 units in parallel for capacity expansion, offers multiple installation methods
- Adopts 100Ah LFP cells, with max. 100A charge/discharge current and intelligent cell balancing
- Multiple protections and current-limiting function  
Multiple protection
- Automatic address allocation, no DIP switch
- Equips with WiFi/BT module plus OTA function



| Model                                | UX-5.1-LPB  |
|--------------------------------------|---|
| Nominal Voltage (V)                  | 51.2  |
| Operating Voltage (V)                | 44.8-57.6   |
| Capacity (Ah)                        | 100   |
| Nominal Capacity (kWh)               | 5.12  |
| Nominal Charge/Discharge Current (A) | 50/50   |
| Max Charge/Discharge Current (A)     | 100/100   |
| Depth of Discharge                   | 95%   |
| Battery Type                         | LFP   |
| Fire Protection System               | Built-in aerosol fire extinguisher  |
| Certificates                         | CB, IEC62619, CE-EMC, EN61000, UKCA, UN38.3, MSDS                         |
| <b>Structure</b>                     |   |
| Dimension (W*D*H)(mm)                | 483*555*130   |
| Weight (Kg)                          | 43  |
| IP Rating                            | IP20  |
| Installation Method                  | Floor mounted, Rack-mounted   |
| <b>Working environment</b>           |   |
| Charge Working Temperature (C)       | 0~55  |
| Discharge Working Temperature (C)    | -20~55  |
| Altitude (m)                         | <2500   |
| Humidity (RH)                        | 5-95%   |
| <b>Communication/Warranty</b>        |   |
| Communication Port                   | RS485, CAN  |
| Warranty Period                      | 5 years   |
| Compatible Inverter List             | DEYE, GROWATT, VICTRON, SOLIS, MUST, LUXPOWER, AFORE, SUNSYNK, FELICTY... |

# Rack Type Residential Battery

## Unity HV

- Modular design, expand from 3 to 12 modules, capacity 15kWh-60kWh
- 44kg single module, separable for easy disassembly and installation
- LFP battery cells, stable performance, 6000 - cycle long life
- Automatically manages batteries, protects against over/under-charge&temp
- Adapts to mainstream high-voltage inverters in the market



| Model                            | UX-15.3-HPB  | UX-20.4-HPB     | UX-25.6-HPB | UX-30.7-HPB     | UX-35.8-HPB     | UX-40.9-HPB     | UX-46-HPB       | UX-51.2-HPB  | UX-56.3-HPB     | UX-61.4-HPB     |  |
|----------------------------------|--|-----------------|-------------|-----------------|-----------------|-----------------|-----------------|--------------|-----------------|-----------------|--|
| Battery Type                     | LFP  |                 |             |                 |                 |                 |                 |              |                 |                 |  |
| Battery Pack Number              | 3  | 4               | 5           | 6               | 7               | 8               | 9               | 10           | 11              | 12              |  |
| Nominal Energy (kWh)             | 15.36  | 20.48           | 25.6        | 30.72           | 35.84           | 40.96           | 46.08           | 51.2         | 56.32           | 61.44           |  |
| Discharge Voltage (V)            | 129.6<br>~172.8                                      | 172.8<br>~230.4 | 216<br>~288 | 259.2<br>~345.6 | 302.4<br>~403.2 | 345.6<br>~460.8 | 388.8<br>~518.4 | 432<br>~576  | 475.2<br>~633.6 | 475.2<br>~633.6 |  |
| Rated Voltage (V)                | 153.6  | 204.8           | 256         | 307.2           | 358.4           | 409.6           | 460.8           | 512          | 563.2           | 614.4           |  |
| Rated Working Current (A)        | 50   |                 |             |                 |                 |                 |                 |              |                 |                 |  |
| Max Charging Current (A)         | 70   |                 |             |                 |                 |                 |                 |              |                 |                 |  |
| Max Discharging Current (A)      | 100  |                 |             |                 |                 |                 |                 |              |                 |                 |  |
| Certificates                     | IEC62619、EN61000-6-1/3、UN38.3                        |                 |             |                 |                 |                 |                 |              |                 |                 |  |
| <b>General Data</b>              |  |                 |             |                 |                 |                 |                 |              |                 |                 |  |
| Display                          | LED  |                 |             |                 |                 |                 |                 |              |                 |                 |  |
| Communication Interface          | RS485/CAN  |                 |             |                 |                 |                 |                 |              |                 |                 |  |
| Dimensions Interface (W*D*H)(mm) | 550*600*1050   |                 |             | 550*60*1450     |                 |                 |                 | 550*600*2050 |                 |                 |  |
| Weight (Kg)                      | 165  | 165             | 253         | 297             | 350             | 394             | 438             | 485          | 529             | 573             |  |
| Working Temperature Range (C)    | Charging: 5~50; Discharging: -20~55; Storage: -20~50 |                 |             |                 |                 |                 |                 |              |                 |                 |  |
| Operating Humidity Range         | 5%RH~95%RH, No condensation                          |                 |             |                 |                 |                 |                 |              |                 |                 |  |
| Altitude (m)                     | 3000   |                 |             |                 |                 |                 |                 |              |                 |                 |  |
| Cooling Method                   | Natural Cooling                                      |                 |             |                 |                 |                 |                 |              |                 |                 |  |
| IP Rating                        | IP20   |                 |             |                 |                 |                 |                 |              |                 |                 |  |
| Installation Method              | Rack mounted (optional installation rack)            |                 |             |                 |                 |                 |                 |              |                 |                 |  |
| Scalability                      | 3~12   |                 |             |                 |                 |                 |                 |              |                 |                 |  |
| <b>Battery Pack</b>              |  |                 |             |                 |                 |                 |                 |              |                 |                 |  |
| Model                            | UX-51-HPB  |                 |             |                 |                 |                 |                 |              |                 |                 |  |
| Battery Pack Specifications      | 51.2V/5.12kWh/100Ah                                  |                 |             |                 |                 |                 |                 |              |                 |                 |  |
| Life Cycles                      | 6000@90%DOD, 25C/0.5C                                |                 |             |                 |                 |                 |                 |              |                 |                 |  |
| Dimensions (W*D*H)(mm)           | 483*550*130  |                 |             |                 |                 |                 |                 |              |                 |                 |  |
| Weight (Kg)                      | 44   |                 |             |                 |                 |                 |                 |              |                 |                 |  |

# FULL-SCENARIO

## C&I Energy Storage Solutions

- Modular architecture, high adaptability
- Intelligent design, efficient integrated management
- Intelligent management, remote monitoring
- Integrated design, safe and convenient

# Rack Type C&I Battery

## Unity HV2

- Modular design allows expansion from 4 to 13 modules, covering a capacity range of 72-235kWh
- Employs LFP battery cells, boasting stable performance and a long cycle life of up to 8000 cycles
- Can be adapted to mainstream high-voltage inverters in the market
- Cloud analysis effectively cuts down operation and maintenance costs



| Model                            | UX-72.3-HPB | UX-90.4-HPB | UX-108.5-HPB | UX-126.6-HPB | UX-144.6-HPB |
|----------------------------------|-------------|-------------|--------------|--------------|--------------|
| Batteries Configuration          | 4 units     | 5 units     | 6 units      | 7 units      | 8 units      |
| System Battery Configuration     | 1P72S       | 1P90S       | 1P108S       | 1P126S       | 1P144S       |
| Battery voltage range (VDC)      | 201.6~259.2 | 252~324     | 302.4~388.8  | 352.8~453.6  | 403.2~518.4  |
| Battery System (kWh)             | 72.32       | 90.4        | 108.48       | 126.6        | 144.6        |
| Max. Matched Inverter Power (kW) | 30          | 40          | 50           | 60           | 70           |

| Model                            | UX-162.7-HPB | UX-180.8-HPB | UX-198.9-HPB | UX-217.0-HPB | UX-235.1-HPB |
|----------------------------------|--------------|--------------|--------------|--------------|--------------|
| Batteries Configuration          | 9 units      | 10 units     | 11 units     | 12 units     | 13 units     |
| System Battery Configuration     | 1P162S       | 1P180S       | 1P198S       | 1P216S       | 1P234S       |
| Battery voltage range (VDC)      | 453.6~583.2  | 504~648      | 554.4~712.8  | 604.8~777.6  | 655.2~842.4  |
| Battery System (kWh)             | 162.7        | 180.8        | 198.9        | 217          | 235.1        |
| Max. Matched Inverter Power (kW) | 80           | 90           | 100          | 110          | 115          |

### System Parameter

|                              |                            |
|------------------------------|----------------------------|
| Comm. Method with PCS        | CAN2.0                     |
| IP Rating                    | IP20                       |
| Cooling Method               | Intell. Forced Air Cooling |
| Working Temperature (°C)     | -20-55                     |
| Humidity (RH)                | 0-95%                      |
| Recommend Depth of Discharge | 90%                        |
| Noise (dB)                   | <70                        |
| Altitude (m)                 | 3000                       |
| Cloud Plat                   | APP+Web                    |
| Certificates                 | IEC62619、EN61000、UN38.3    |

### Battery Pack

|                             |                              |
|-----------------------------|------------------------------|
| Battery Pack Specifications | 57.6V/18.08kWh/314Ah         |
| Life Cycles                 | 8000, 70% SOH (90%DOD, 25°C) |
| Fire Protection System      | Aerosol                      |
| Dimensions (W*D*H)(mm)      | 483*825*235                  |
| Weight (kg)                 | 126±3                        |

# Outdoor Distributed Energy Storage System (Air-cooling)

## Cube 60

- "Smart cloud" + APP/WEB real-time tracking, 4G/Wifi enabled
- Support 30kW/50kW, small industrial/commercial use, PV AC/DC 1.3
- 55% space saved; cabinet delivery cuts 50% time/cost
- 0.83C discharge,  $\leq 5^{\circ}\text{C}$  temp difference, 30% longer life,  $\leq 20\text{ms}$  switch
- IP54&C4 corrosion/salt spray resistance, fire-preventing thermal wires, anti-theft, remote alarm 20ms switch



| Model                                       | Cube 60   |                           |
|---|---|---------------------------|
| <b>System</b>                               |   |                           |
| Battery Energy (kWh)                        | 61.44   | 61.44                     |
| Rated Power (kW)                            | 30  | 50                        |
| AC Output                                   | 400V, 3L+N+PE, 50Hz/60Hz  | 400V, 3L+N+PE, 50Hz/60Hz  |
| Off-grid Switching Time (ms)                | $\leq 20$   | $\leq 20$                 |
| Communication                               | Wifi/ 4G/ USB/ CAN/ RS485   | Wifi/ 4G/ USB/ CAN/ RS485 |
| Cooling Method                              | Air cooling   | Air cooling               |
| IP Rating                                   | IP54  | IP54                      |
| Working Temperature ( $^{\circ}\text{C}$ )  | -20~55  | -20~55                    |
| Humidity                                    | 5%RH~95%RH  | 5%RH~95%RH                |
| Altitude (m)                                | $\leq 3000$   | $\leq 3000$               |
| System Dimensions (W*D*H)(mm)               | 650*750*2150  | 650*750*2150              |
| Fire Protection System                      | Aerosol   | Aerosol                   |
| Weight (kg)                                 | 880   | 880                       |
| <b>Battery</b>                              |   |                           |
| Battery PACK                                | 5.12kWh/100Ah   | 5.12kWh/100Ah             |
| Battery System                              | 61.44kWh/100Ah  | 61.44kWh/100Ah            |
| Battery Voltage Range (VDC)                 | 537.6~691.2   | 537.6~691.2               |
| Endurance Cycle                             | 6000  | 3000                      |
| Certificates                                | IEC62619, EN61000-6-1/3, UN38.3, RoHs                               |                           |
| <b>PV</b>                                   |   |                           |
| Max DC Input Power (kW)                     | 39  | 65                        |
| Max DC Input Voltage (VDC)                  | 1000  | 1000                      |
| Rated Input Voltage (VDC)                   | 600   | 600                       |
| MPPT Voltage Range (VDC)                    | 150~850   | 150~850                   |
| MPPT Number/Strings Number per MPPT Tracker | 3*6   | 4*8                       |
| <b>AC Side</b>                              |   |                           |
| Rated Output Active Power (kW)              | 30  | 50                        |
| Max Output Current (A)                      | 50/47.8   | 83.4/79.7                 |
| THDi  | <3%   | <3%                       |
| THDu  | <3%   | <3%                       |
| PCS Certificates                            | EN62109, EN61000, IEC62116/IEC61727, EN50549, VDE4105, NRS 097 etc. |                           |

# Outdoor Distributed Energy Storage System (Air-cooling)

## Cube 72/90/108

- Modular design allows expansion from 4 to 6 modules, offering a capacity range of 72-108kWh, suiting various needs
- Supports 30/40/50kW, catering to small commercial and industrial (C&I) scenarios
- Thermally sensitive wire enables fire extinguishment in extreme conditions, and seamless switching time is  $\leq 20\text{ms}$
- Operates with a DC/AC ratio of 1.5 for PV energy, and comes with a 4G/Wifi module for remote access
- Maximizes space utilization by reducing floor space by 55%. Delivered in cabinets, it saves 50% of installation time and cost



| Model                        | Cube 72                                  | Cube 90     | Cube 108    |
|------------------------------|--|-------------|-------------|
| <b>System</b>                |  |             |             |
| Battery Energy (kWh)         | 72                                       | 90          | 108         |
| Rated Power (kW)             | 30                                       | 40          | 50          |
| AC Output                    | 400V, 3L+N+PE, 50Hz/60Hz                 |             |             |
| Off-Grid Switching Time (ms) | <10                                      |             |             |
| Communication                | Wifi/4G/CAN/RS485                        |             |             |
| Cooling Method               | Air conditioning cooling                 |             |             |
| IP Rating                    | IP54                                     |             |             |
| Working Temperature (°C)     | -20~55                                   |             |             |
| Humidity                     | 0%RH~95%RH, No condensation              |             |             |
| Altitude (m)                 | 3000 (>2000 derating)                    |             |             |
| Dimensions (W*D*H)(mm)       | 1000*1471*1850                           |             |             |
| Fire Protection System       | Aerosol                                  |             |             |
| Weight (kg)                  | 1009                                     | 1137        | 1265        |
| Certificates                 | IEC62619, EN61000, UN38.3                |             |             |
| <b>Battery</b>               |  |             |             |
| Battery Pack                 | 57.6V/18.08kWh/314Ah                     |             |             |
| Battery System (kWh)         | 72.32                                    | 90.40       | 108.48      |
| Battery Voltage Range (VDC)  | 201.6~259.2                              | 252.0~324.0 | 302.4~388.8 |
| Endurance Cycle              | 8000, 70% SOH (90%DOD, 25°C)             |             |             |
| <b>PV(Optional)</b>          |  |             |             |
| Max DC Input Power (kW)      | 38.4+38.4                                |             |             |
| Max DC Input Voltage (VDC)   | 850                                      |             |             |
| MPPT Voltage Range (VDC)     | 200-800                                  |             |             |
| Start-up Voltage (V)         | 250                                      |             |             |
| Max Input Current (A)        | 64 + 64                                  |             |             |
| <b>AC Side</b>               |  |             |             |
| Rated Power (kVA)            | 30                                       | 40          | 50          |
| Rated Current (A)            | 43.5                                     | 58.0        | 72.5        |
| THDi                         | <3% (Over 30% load)                      |             |             |
| THDu                         | <3% (Resistive load)                     |             |             |
| PCS Certificates             | CE, IEC62019, IEC62477, IEC6100, EN50549 |             |             |

# Outdoor Distributed Energy Storage System (Air-cooling)



## Cube 125/161/192/225

- Thermally sensitive wire for fire extinguishment in extreme conditions
- Seamless switching time ≤ 10ms
- Reduce on-site installation time and costs by 50%
- Photovoltaic energy at a DC/AC ratio of 1.9
- 2.5-hour energy storage/5 -hour energy storage



| Model  | Cube 125  | Cube 161       | Cube 192       | Cube 225          |
|--|---|----------------|----------------|-------------------|
| <b>System</b>                                  |   |                |                |                   |
| Battery Energy (kWh)                           | 128   | 161            | 192            | 225               |
| Rated Power (kW)                               | 50  | 50/60/80       | 50/60/80/100   | 50/60/80/100/125  |
| AC Output                                      | 400V, 3L+N+PE, 50Hz/60Hz  |                |                |                   |
| Off-grid Switching Time (ms)                   | <10   |                |                |                   |
| Communication                                  | Wifi/4G/USB/CAN/RS485   |                |                |                   |
| Cooling Method                                 | Air cooling   |                |                |                   |
| IP Rating                                      | IP54  |                |                |                   |
| Working Temperature (°C)                       | -20~55  |                |                |                   |
| Humidity                                       | 5%RH~95%RH  |                |                |                   |
| Altitude (m)                                   | ≤3000   |                |                |                   |
| System Dimensions (W*D*H)mm                    | 1000*1125*1700  | 1000*1125*2050 | 1000*1125*2050 | 1000*1125*2300    |
| Fire Protection System                         | Aerosol   |                |                |                   |
| Weight (kg)                                    | 1300  | 1700           | 1950           | 2180              |
| <b>Battery</b>                                 |   |                |                |                   |
| Battery Pack                                   | 32.15kWh/314Ah  |                |                |                   |
| Battery Voltage Range (VDC)                    | 358.4~460.8   | 448~576        | 537.6~691.8    | 627.2~806.4       |
| Endurance Cycle                                | 8000, 70% SOH (90%DOD, 25°C)  |                |                |                   |
| Certification                                  | IEC62619, IEC61000, UN38.3  |                |                |                   |
| <b>PV</b>                                      |   |                |                |                   |
| Max DC Input Power (kW)                        | 96  | 96/120/160     | 96/120/160/200 | 96/120/160/240    |
| Max DC Input Voltage (VDC)                     | 1000  |                |                |                   |
| Rated Input Voltage (VDC)                      | 600   |                |                |                   |
| MPPT Voltage Range (VDC)                       | 150~850   |                |                |                   |
| MPPT Number/Strings<br>Number per MPPT Tracker | 4*8/10*20   |                |                |                   |
| <b>AC Side</b>                                 |   |                |                |                   |
| Rated Output Active Power (kW)                 | 50  | 50/60/80       | 50/60/80/100   | 50/60/80/100/125  |
| Max Output Current (A)                         | 76  | 76/91/121      | 76/91/121/152  | 76/91/121/152/189 |
| THDi   | <3%   |                |                |                   |
| THDu   | <3%   |                |                |                   |
| PCS Certificates                               | EN62109, EN61000, IEC62116/IEC61727, EN50549, VDE4105, NRS 097 etc. |                |                |                   |

# Outdoor Distributed Energy Storage System

## Cube 225-Y

- Unlimited grid-connected expansion, support seamless switching within <10ms
- Battery management system and comprehensive thermal management
- Fault classification protection mechanism
- Charge and discharge cycles  $\geq 7000$  times



| Model                      | Cube 225-Y  |
|----------------------------|---|
| <b>PV (DC)</b>             |   |
| Max PV Input Power (kW)    | 220   |
| PV Input Voltage Rate (V)  | 250~607   |
| MPPT                       | 4   |
| <b>Battery (DC)</b>        |   |
| Rated Battery Energy (kWh) | 225   |
| Rated System Voltage (V)   | 716.8   |
| Battery Type               | LFP   |
| Battery Capacity (Ah)      | 314   |
| Series of Battery          | 1P*32S*7S   |
| <b>AC Output</b>           |   |
| Rated AC Power (kW)        | 100   |
| Rated AC Current (A)       | 144   |
| Rated AC Voltage           | 400V, 3P+N+PE, 50/ 60Hz   |
| THDi                       | <3% (rated power)   |
| PF                         | -1 leading to+1 lagging   |
| <b>General Data</b>        |   |
| Protection Level           | IP55  |
| Operating Temperature (°C) | -25~60(Derating above 45)   |
| Altitude (m)               | 3000 (>3000 derating)   |
| Dimensions (W*D*H)(mm)     | RS485/ CAN 2.0/ Ethernet/ dry contact   |
| Dimension (W*D*H)mm        | 1700*1200*2300  |
| Fire Protection System     | Aerosol   |
| Cooling Method             | Air conditioning cooling  |
| Weight (approx.)(kg)       | 3300  |
| Certificates               | UN38.3, IEC62619, IEC/EN62477, EN61000, CEI016, IEC62116/ IEC61727, G99, EN50549, VDE4110, NRS 097 etc. |

# Outdoor Distributed Energy Storage System

## Cube 261

- High space utilization and easy installation
- Temperature difference <math>< 3^{\circ}\text{C}</math>, extended life span >math>> 20\%</math>
- Pack-level precision fire protection
- AC-side conversion efficiency >math>> 90\%</math>
- Intelligent management, real-time monitoring
- High protection level



| Model                        | Cube 261   |
|------------------------------|--|
| <b>System</b>                |  |
| Battery Capacity (kWh)       | 261  |
| Installation Location        | Outdoor  |
| Noise                        | ≤70dB  |
| Communication                | 4G/CAN/RS485   |
| Cooling Method               | Liquid cooling   |
| Protection Level             | IP55   |
| Operation Temperature (°C)   | -25~55   |
| Humidity                     | 5%RH~95%RH   |
| Altitude (m)                 | ≤3000  |
| Dimensions (W*D*H)(mm)       | 1000*1300*2350   |
| Fire Protection System       | Aerosol  |
| Weight (kg)                  | 2500   |
| <b>Battery</b>               |  |
| Pack Capacity (kWh)          | 52.2   |
| System Capacity (kWh)        | 261.2  |
| Battery Voltage Range (V)    | 650~949  |
| Cycle Life                   | ≥8000  |
| Certificates                 | IEC62619、EN61000-6-1/3、UN38.3、RoHs   |
| <b>AC Side</b>               |  |
| Output Power (kVA)           | 125  |
| Charge/Discharge Current (A) | 200  |
| MAX. AC Power (kW)           | 150  |
| MAX AC Current (A)           | 210  |
| AC Voltage (V)               | 400, 3L+N+PE, 50/60Hz  |
| Current Harmonics            | <math>< 3\%</math>   |
| Voltage Distortion Degree    | <math>< 3\%</math>   |
| PCS Certificates             | IEC62477, IEC61000, IEC61226+62717, G99, EN50549-1, EN50549-2, EN50549-10, NRS -097, C10/11, VDE4110, NC Rfg PSE |

# Outdoor Distributed Energy Storage System

## Cube 261-Plus

- All-in-one modular. On-demand capacity expansion. Pre-commissioned AC & DC system delivery
- Flexible DC-side expansion, fits 2-8h scenarios
- PV AC coupling with AI. Precise charge/discharge by price for max revenue
- Intelligent liquid cooling.  $\leq 2.5^{\circ}\text{C}$  cell temp diff, +30% lifespan, -20% energy use
- Modular for easy operation, install & maintenance



| Model                              | Cube 261-Plus                       |
|------------------------------------|-------------------------------------|
| <b>System Parameter</b>            |                                     |
| Maximum System Efficiency          | $\geq 90\%$                         |
| Charge - Discharge Rate            | $\leq 0.5\text{P}$                  |
| Working Temperature (°C)           | -30-55                              |
| Humidity (RH)                      | 5%~95%                              |
| Cooling Method                     | Liquid cooling                      |
| IP Rating                          | IP55                                |
| Corrosion Protection Grade         | C4                                  |
| Noise (Rated Operating Condition)  | 70dB@1m                             |
| Altitude (m)                       | $\leq 3000$ (>2000 derating)        |
| Fire Protection System             | PACK-level + Cluster-level aerosols |
| Communication                      | 4G/RS485/Ethernet/Wi-Fi (optional)  |
| System Dimensions (W*D*H)(mm)      | 1000*1300*2300                      |
| Weight (kg)                        | 2500                                |
| Certification                      | IEC61000, IEC62619, UL9540A, UN38.3 |
| <b>Battery Parameter</b>           |                                     |
| Battery Type                       | LFP3.2V/314Ah                       |
| System Battery Configuration       | 1P260S                              |
| Battery System (kWh)               | 261                                 |
| Battery Voltage Range(VDC)         | 728~936                             |
| Endurance Cycle                    | 8000, 70% SOH(90%DOD,25°C)          |
| <b>AC Side Parameters</b>          |                                     |
| Rated Output Power (kW)            | 125                                 |
| Grid Voltage Range                 | 300~440                             |
| Wiring Mode                        | 3L+N+PE                             |
| Frequency (Hz)                     | 50/60                               |
| Rated Charge/Discharge Current (A) | 182                                 |
| Power Factor                       | >0.99(-1 leading - 1 lagging)       |
| THDi                               | <3%(Rated Power)                    |

# Outdoor Distributed Energy Storage System

## Cube 261-Y

- Intelligent temperature control balance, system efficiency  $\geq 89\%$
- High-efficiency 314Ah battery, cycle life 8000 times @70%
- Cloud platform interconnection management
- Multi-scenario application, and seamless switching between off-grid and on-grid within <20ms



| Model                      | Cube 261-Y   |
|----------------------------|--|
| <b>PV (DC)</b>             |  |
| Max PV Input Power (kW)    | 220  |
| PV Input Voltage Rate (V)  | 250-708  |
| MPPT                       | 4  |
| <b>Battery (DC)</b>        |  |
| Rated Battery Energy (kWh) | 261  |
| Rated System Voltage (V)   | 832  |
| Battery Type               | LFP  |
| Battery Capacity (Ah)      | 314  |
| Series of Battery          | 1P*52S*5S  |
| <b>AC Output</b>           |  |
| Rated AC Power (kW)        | 125  |
| Rated AC Current (A)       | 180  |
| Rated AC Voltage           | 400V, 3P+N+PE, 50/60Hz   |
| THDi                       | <3% (rated power)  |
| PF                         | -1 leading to +1 lagging   |
| <b>General Data</b>        |  |
| Protection Level           | IP54   |
| Operating Temperature (°C) | -25~60(Derating above 45)  |
| Altitude (m)               | 3000m (>3000m derating)  |
| Communication              | RS485/ CAN 2.0/ Ethernet/ dry contact  |
| Dimensions (W*D*H)(mm)     | 1696*1350*2300   |
| Fire Protection System     | Aerosol  |
| Cooling Method             | Liquid cooling   |
| Weight (approx.)(kg)       | 3400   |
| Certificates               | UN38.3, IEC62619, IEC/EN62477, EN61000, CEI016, IEC62116/IEC61727, G99, EN50549, VDE4110, NRS 097 etc. |

# Outdoor Distributed Energy Storage System

## Cube 418

- All-in-one architecture, AC/DC integrated pre-commissioned delivery, modular quick installation
- Supports modular build from 100kWh to GWh scale
- Covers three core areas – C&I energy saving, grid-side support, renewable energy storage & grid connection
- Full-dimensional regulation, millisecond response to primary FR, accurate matching of secondary FR
- Cell temperature difference  $\leq 2.5\text{ C}$ , 30% longer lifespan, 20% lower energy consumption
- IP55 rating, adaptive to extreme climates, supports remote intelligent control



| Model                              | Cube 418                            |
|------------------------------------|-------------------------------------|
| <b>System Parameter</b>            |                                     |
| Maximum System Efficiency          | $\geq 90\%$                         |
| Charge - Discharge Rate            | $\leq 0.5\text{P}$                  |
| Working Temperature ( C )          | -30-55 C                            |
| Humidity (RH)                      | 0%-95%                              |
| Cooling Method                     | Liquid cooling                      |
| IP Rating                          | IP55                                |
| Corrosion Protection Grade         | C4                                  |
| Noise (Rated Operating Condition)  | 70dB@1m                             |
| Altitude (m)                       | $\leq 3000$ ( $>2000$ derating)     |
| Fire Protection System             | PACK-level + Cluster-level aerosols |
| Communication                      | 4G/RS485/Ethernet/Wi-Fi (optional)  |
| System Dimensions (W*D*H)(mm)      | 1600*1300*2350                      |
| Weight (kg)                        | 3900                                |
| Certification                      | IEC61000, IEC62619, UN38.3          |
| <b>Battery Parameter</b>           |                                     |
| Battery Type                       | LFP3.2V/314Ah                       |
| System Battery Configuration       | 1P416S                              |
| Battery System (kWh)               | 418                                 |
| Battery Voltage Range (VDC)        | 1165-1498                           |
| Endurance Cycle                    | 8000, 70% SOH(90%DOD,25 C)          |
| <b>AC Side Parameters</b>          |                                     |
| Rated Output Power (kW)            | 200                                 |
| Grid Voltage Range                 | 690V $\pm 15\%$                     |
| Wiring Mode                        | 3L+PE                               |
| Frequency (Hz)                     | 50/60                               |
| Rated Charge/Discharge Current (A) | 168                                 |
| Power Factor                       | $>0.99$ (-1 leading - 1 lagging)    |
| THDi                               | $<3\%$ (Rated Power)                |

# Outdoor Distributed Energy Storage System

## Cube 1000-A

- Supports parallel operation of 4 cabinets and off-grid switching without communication
- Pre - installed in the factory for easy on-site installation
- Effortless operation and cloud monitoring
- The cell temperature difference < 5°C



| Model                                 | Cube 1000-A  |
|---------------------------------------|--|
| PCS Cabinet                           | Monet-500TS  |
| Rated AC Power (kW)                   | 500 (125*4)  |
| Rated AC Current (A)                  | 200*4  |
| Rated AC Voltage                      | 400V, 3W+N+PE  |
| DC Voltage Range (V)                  | 580~950  |
| Isolation Transformer (optional)(kVA) | 250/500  |
| STS (optional)(kW)                    | 150/300/600  |
| Protection Level                      | IP54   |
| Cooling Method                        | Intelligent air cooling  |
| Altitude (m)                          | 3000 (over 2000 derating)  |
| Dimensions (W*D*H)(mm)                | 1350*1000*2300   |
| Weight (approx.)(kg)                  | 2240   |
| Certificates                          | EN50549-1,EN 62477-1,VDE V0126-1-1, NRS 097-2-1, EN 50549-1/-2 NL, IEC61000-6-2/-4 |
| <b>PV Cabinet</b>                     | Monet-(DC500)  |
| Rated Power (kW)                      | 500 (50*10)  |
| PV Open-circuit Voltage (V)           | 250-607  |
| Max PV Input Current (A)              | 10*160   |
| MPPT Quantity                         | 10   |
| Power Factor                          | -1 leading to +1 lagging   |
| THDU                                  | <3% (Rated power)  |
| Protection Level                      | IP54   |
| Cooling Method                        | Intelligent air cooling  |
| Dimensions (W*D*H)(mm)                | 1350*1000*2300   |
| Weight (approx.)(kg)                  | 900  |
| Certificates                          | EN/IEC62109-11-2, EN/IEC 61000-6-21-4  |
| <b>Battery Cabinet</b>                | GM-225.0-HPB   |
| Rated Battery Energy (kWh)            | 2.25   |
| System Rated Voltage (V)              | 716.8  |
| System Voltage Range (V)              | 580~817.6  |
| Series of Battery                     | 1P*32S*7S  |
| Cooling Method                        | Air conditioning cooling   |
| Protection Level                      | IP54   |
| Dimensions (W*D*H)(mm)                | 1000*1100*2300   |
| Weight (approx.)(kg)                  | 2180   |
| Certificates                          | UN38.3, IEC62619, IEC61000-6-21-4  |

# Outdoor Distributed Energy Storage System (Liquid-cooling)



## StorC 1MW/2MWh

- Enables immediate tracking of system status
- Features fire protection design and enhanced environmental tolerance
- High environmental adaptability, lower operating noise
- Longer life cycle with increased usable energy, better battery cell temperature difference control
- Offers intelligent operation and maintenance along with customized services



| Model                          | StorC 1MW/2MWh   |
|--------------------------------|--|
| <b>Battery</b>                 |  |
| Nominal Capacity (MWh)         | 2.089  |
| Cell Type                      | LFP 3.2V/314Ah   |
| Nominal DC Voltage (V)         | 832  |
| DC Voltage Range (V)           | 728-936  |
| Max DC Current (A)             | 206*8  |
| Battery Model                  | 1P*52S*5S  |
| <b>Electrical Parameter</b>    |  |
| Rated/Max Power (kW)           | 1000/1100  |
| Rated Voltage (V)              | 400, 3W+PE   |
| Rated AC Frequency (Hz)        | 50/60±5  |
| Operating Voltage Range (V)    | 580-1000   |
| Full-Load Voltage Range (V)    | 625-950  |
| THDi (Rated Power)             | <3%  |
| Power Factor                   | -1 Leading ~ +1 Lagging  |
| <b>Conventional Parameters</b> |  |
| IP Protection Level            | IP54   |
| Cooling Method                 | Liquid Cooling   |
| Dimensions (W*D*H)(mm)         | 6058*2438*2896   |
| Weight (T)                     | 25   |
| Certificates                   | UN38.3, IEC62619, IEC/EN62477, EN61000, CEI016, IEC62116/IEC61727, G99, EN50549, VDE4110, NRS 097 etc. |

# Outdoor Distributed Energy Storage System (Liquid-cooling)



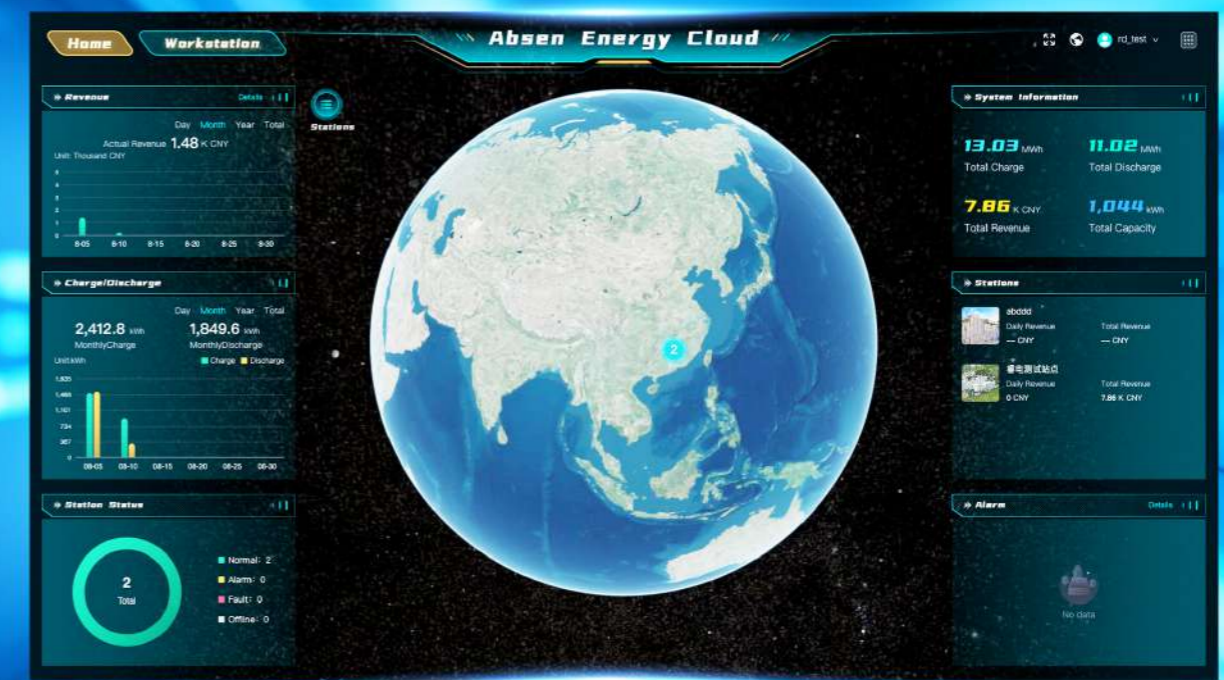
## StorC 2.5MW/5MWh

- Provides instant oversight of operations
- Reduces battery parallel connection, ensuring better system safety and higher capacity utilization
- Higher energy density, longer lifecycle with more usable energy, and stronger environmental tolerance
- One cluster, one management approach simplifies operations
- Offers customized services along with intelligent operation and maintenance



| Model                           | StorC 2.5MW/5MWh   |
|---------------------------------|--|
| <b>Battery</b>                  |  |
| Nominal Capacity (MWh)          | 5.016  |
| Cell Type                       | LFP 3.2V/314Ah   |
| Nominal DC Voltage (V)          | 1331   |
| DC Voltage Range (V)            | 1164.8~1497.6  |
| Max DC Current (A)              | 206*12   |
| Battery Model                   | 12P*52S*8S   |
| <b>Electrical Parameter</b>     |  |
| Rated/Max Power (kW)            | 2500/2750  |
| Voltage Transformation (kV)     | 22   |
| Transformer Type                | Oil-Immersed transformer                                 |
| LV Side Rated/Max AC Power (kW) | 2500/2750  |
| LV Side Rated Grid Voltage (V)  | 690  |
| LV Side Rated AC Frequency (Hz) | 50/60±5  |
| THDi (Rated Power)              | <3%  |
| Power Factor                    | -1 Leading ~ +1 Lagging                                  |
| <b>Conventional Parameters</b>  |  |
| IP Protection Level             | IP54   |
| Cooling Method                  | Liquid Cooling   |
| Dimensions (W*D*H)(mm)          | Electrical Container/Battery Container<br>6058*2438*2896 |
| Certificates                    | CE, EMC, UN38.3  |

# ABSEN ENERGY Cloud Management Platform



## Efficient Management

- Multi-role perspective management billboard
- Power station self-identification and self-organization network access
- Remote batch settings make upgrades easier

## Intelligent Operation and Maintenance

- Online instant consultation and service
- Intelligent analysis of power station revenue and operation trends
- Automatic inspection and report generation

## Peace of Mind

- Cloud security guard provides early warning of potential risks
- Promptly notify terminal and accurately locate the fault location
- Provides cell-level multi-dimensional real-time information

## Innovation Architecture

- Integrate AI large models and customize exclusive services
- Cloud service architecture supports unlimited device access
- Quick system function selection and upgrade





**8.18MW/16.37MWh**  
Suzhou, China

Cube 372  
Energy Storage System

HV10-2000  
Transformer



**1.84MW/3.68MWh**  
Sichuan, China

Cube 230  
All-in-One  
Energy Storage Cabinet



**2.3MW/4.6MWh**  
Huizhou, Guangdong

AX 3400, Cube 230,  
Cube 232, Cube 215  
Energy Storage Systems



**1.1MW/2.2MWh**  
Dongguan, Guangdong

Cube 200  
All-in-One  
Energy Storage Cabinet



**1.86MW/3.72MWh**  
Zhongshan, Guangdong

Cube 200, Cube 230  
Energy Storage System



**1MW/2MWh**  
Huizhou, Guangdong

Cube 200  
All-in-One  
Energy Storage Cabinet



**0.92MW/1.92MWh**  
Guangdong, China

**Cube 230**  
Outdoor Distributed  
Energy Storage System



**400kW/1024kWh**  
Middel East

**Cube 128**  
Outdoor Distributed  
Energy Storage System



**500kW/900kWh**  
Arequipa, Peru

**Cube 1000**  
Outdoor Distributed  
Energy Storage System



**125kW/261kWh**  
Myanmar

**Cube 261-Y**  
Outdoor Distributed  
Energy Storage System



**500kW/900kWh**  
Yangon, Myanmar

**Cube 1000**  
Outdoor Distributed  
Energy Storage System



**100kW/120kWh**  
Yangon, Myanmar

**Cube 60**  
Outdoor Distributed  
Energy Storage System



**100kW/215kWh**  
Middel East

**Cube 215**  
All-in-One Energy Storage Cabinet



**50kW/125kWh**  
Middel East

**Cube 125**  
All-in-One Energy Storage Cabinet



**100kW/215kWh**  
Myanmar, Mawlamyine

**Cube 215**  
Outdoor Distributed, Energy Storage System



**100kW/120kWh**  
Myanmar, Meiktila

**Cube 60-S**  
Outdoor Distributed, Energy Storage System



**50kW/60kWh**  
Middel East

**Cube 125**  
All-in-One Energy Storage Cabinet



**50kW/125kWh**  
Middel East

**Cube 125**  
All-in-One Energy Storage Cabinet

## Residential ESS Cases



**15kW/30kWh**  
Middle East

**Unity HV**  
Rack Type Residential Battery



**20kW/40kWh**  
Bohol Island, Philippines

**Pile Series**  
Low-Voltage Stackable Residential Battery